



Side By Side Connectors and Splicers



#25G - Bronze Small 1" All Purpose Connector with bolt, nut and washer for connecting two cables through 2/0. Adjusts to various size cables. Wt. .28 lb. ea. ★

#A25G - Aluminum Small 1" All Purpose Connector. Wt. .14 lb. ea. ★



#G27 - Bronze Large 4" All Purpose Connector with two stainless steel 3/8" bolts, nuts and washers and used for connecting two cables or rods through 2/0 or 5/8" dia. Wt. .86 lb. ea. ★

#AG27 - Aluminum Large 4" All Purpose Connector. Wt. .34 lb. ea. ★

#G28 - Bronze 2" All Purpose Connector with two stainless steel 3/8" bolts, nuts and washers and used for connecting two cables or rods through 2/0 or 5/8" dia. Wt. .54 lb. ea. ★

#AG28 - Aluminum 2" All Purpose Connector. Wt. .28 lb. ea. ★

Note: Splicers below are made of durable metal. Channel locks are used to crimp fingers around cable.



#193A - Cast Copper Bronze Double Splicer for standard cables. 2" long. Wt. .16 lb. ea. ★

#A193A - Aluminum Double Splicer for Standard Cable. Wt. .06 lb. ea. ★

#193X - Cast Copper Bronze Double Splicer for standard & Miniature cables. 2" long. Wt. .08 lb. ea. ★

#A193X - Aluminum Double Splicer for Standard and Miniature Cables. Wt. .06 lb. ea. ★



#193S - Copper Pressed Double Splicer. Splicer is 2" in length and is for two standard cables or one miniature and one standard cable. Wt. .12 lb. ea. ★

#A193S - Aluminum Pressed Double Splicer. Wt. .06 lb. ea. ★

★ Denotes normally stocked item available for shipment within 48 hours. Items not stocked are available within 14 days.



Product Manufactured by: Independent Protection Co., Inc.
Product Distributed by: Ohio Valley Lightning Protection, Inc.
520 Leeka Road, New Vienna, OH 45159
Ph: 937.987.0245 or 866.220.2952 Fax: 937.987.0248
Email: LightningBuck@aol.com
Website: www.lightning-systems.com



Side By Side Connectors and Clamps



#296 - Bronze Large Heavy duty All Purpose Connector, with two 3/8" stainless steel bolts, nuts and washers for connecting two cables or rods through 250m circular mills or 3/4" diameter. Wt. .80 lb. ea. ★

#A296 - Aluminum Large Heavy Duty All Purpose Clamp. Wt. .38 lb. ea. ★



#297 - Bronze Small Many Purpose Clamp for connecting No. 4 or No. 6 wires or cables to round guy wires, floor mesh, metallic braces, etc. Wt. .16 lb. ea. ★

#A297 - Aluminum Small Many Purpose Clamp. Wt. .08 lb. ea. ★



#297A - Bronze Large Many Purpose Clamp heavy duty, for clamping two standard cables through 2/0 and/or 1/2" and 5/8" rods. 2" long. Wt. .38 lb. ea. ★

#A297A - Aluminum Large Many Purpose Clamp. Wt. .14 lb. ea. ★

★ Denotes normally stocked item available for shipment within 48 hours. Items not stocked are available within 14 days.



Product Manufactured by: Independent Protection Co., Inc.
Product Distributed by: Ohio Valley Lightning Protection, Inc.
520 Leeka Road, New Vienna, OH 45159
Ph: 937.987.0245 or 866.220.2952 Fax: 937.987.0248
Email: LightningBuck@aol.com
Website: www.lightning-systems.com



End to End Straight Connectors



#3X - Straight Splicer for miniature cable. Part is cast of copper bronze. 3" long. Wt. .06 lb. ea. ★

#A3X - Aluminum Miniature Straight Splicer—Cast. Wt. .04 lb. ea. ★



#33L - Standard Straight Splicer. Made of pressed copper. Gripping strength 260 pounds. 3 3/4" long. Wt. .10 lb. ea. ★

#A33L - Aluminum Standard Straight Splicer. Wt. .04 lb. ea. ★



#33X - Straight Splicer for standard cables. Part is cast of copper bronze. Gripping strength is 500 pounds. 4 1/2" long. Wt. .20 lb. ea. ★

#A33X - Aluminum Straight Splicer—Cast. Wt. .08 lb. ea. ★



#G73 - Bronze Heavy Duty Four Screw Cable Splicer for use in splicing 1/0 through 2/0 cables. Larger sizes available upon request. Wt. .66 lb. ea. ★

#AG73 - Aluminum Heavy Duty Four Screw Cable Splicer. Wt. .24 lb. ea. ★



#303 - Bronze Pressure Type Straight Cable Splicer for connecting cables through 2/0. Furnished complete with stainless steel hex bolts and washers. Bolt type cable action offers maximum strength. Wt. .58 lb. ea. ★

#A303 - Aluminum Pressure Type Straight Cable Splicer. Wt. .20 lb. ea. ★

#303X - Bronze Disconnecter. Part is a modified version of 303. Disconnecter is drilled out for 3/8" bolts for attachment to vertical walls. Wt. .58 lb. ea. ★

#A303X - Aluminum Disconnecter. Wt. .20 lb. ea. ★

★ Denotes normally stocked item available for shipment within 48 hours. Items not stocked are available within 14 days.



Product Manufactured by: Independent Protection Co., Inc.
Product Distributed by: Ohio Valley Lightning Protection, Inc.
520 Leeka Road, New Vienna, OH 45159
Ph: 937.987.0245 or 866.220.2952 Fax: 937.987.0248
Email: LightningBuck@aol.com
Website: www.lightning-systems.com



"T" Type Cable Connectors



#3 - Copper Bronze "T" Splicer for connecting miniature cable to standard cable—cast. Wt. .10 lb. ea. ★

#A3 - Aluminum "T" Splicer. Wt. .08 lb. ea. ★



#34L - Standard "T" Splicer made of pressed copper. Gripping strength 260 pounds. Wt. .12 lb. ea. ★

#A34L - Aluminum Standard "T" Splicer. Wt. .04 lb. ea. ★



#G181 - Bronze Heavy Duty Three Way Connector for 1/0 or 2/0 cables with bolt type cable connection used for "T" cable splice on roof and for connecting to counterpoise cable. Eliminates right angle connections. Connector has 8" of contact with horizontal cable and 4" of contact with vertical or branch conductor. Wt. 2.10 lb. ea.

#AG181 - Aluminum Heavy Duty Three Way Cable Clamp. Wt. .74 lb. ea.



#262 - Copper Bronze T Splicer for standard cables. Gripping strength is 500 lbs. Wt. .22 lb. ea. ★

#A262 - Aluminum T Splicer. Wt. .12 lb. ea. ★



#304 - Bronze Pressure Type "T" Cable Splicer for clamping standard cables through 2/0. Furnished complete with two stainless steel hex bolts. Bolt type cable action offers maximum strength. Wt. .52 lb. ea. ★

#A304 - Aluminum Pressure Type "T" Cable Splicer. Wt. .18 lb. ea. ★

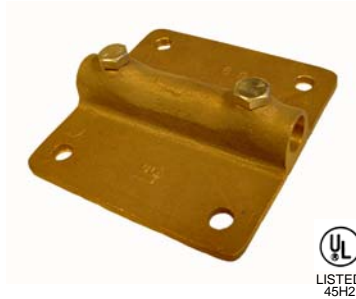
★ Denotes normally stocked item available for shipment within 48 hours. Items not stocked are available within 14 days.



Product Manufactured by: Independent Protection Co., Inc.
Product Distributed by: Ohio Valley Lightning Protection, Inc.
520 Leeka Road, New Vienna, OH 45159
Ph: 937.987.0245 or 866.220.2952 Fax: 937.987.0248
Email: LightningBuck@aol.com
Website: www.lightning-systems.com



Connectors, Splicers, Fittings, Bonding Plates, Etc.



#G88 - Bronze Extra Heavy Duty Large Bonding Plate, 6" x 4 1/2" x 3/8" thick. For standard cables through 2/0. For use when an extra heavy duty large bonding plate is required. 27 sq. inches of bonding surface. Wt. 1.24 lb. ea.

#AG88 - Same as above only in aluminum. Wt. .40 lb. ea.

#G89 - Bronze Heavy Duty Large Bonding Plate, similar to above, 4" x 4" x 3/16" thick with 126 square inches of bonding surface. Wt. 1.20 lb. ea.

#AG89 - Same as above only in aluminum. Wt. .40 lb. ea.



#G95 - Bronze Large Heavy Duty Cross Run Connector with hex-head screws. Measures 4" x 4" and used for bonding standard cables through 2/0 to 1/2", 5/8", or 3/4" dia. ground rods at right angles. When ordering, please specify size of ground rod and cable. Wt. 1.22 lb. ea.

#AG95 - Same as above only in aluminum. Wt. .40 lb. ea.



#119 - Bronze Cross Run Clamp for cross connecting standard cables up to 1/2" diameter. Wt. .40 lb. ea. ★

#A119 - Same as above only in aluminum. Wt. .14 lb. ea. ★

#119A - Bronze Cross Run Clamp. For use with cables or ground rods up to 5/8" diameter. Wt. .46 lb. ea. ★

#A119A - Same as above only in aluminum. Wt. .16 lb. ea. ★

★ Denotes normally stocked item available for shipment within 48 hours. Items not stocked are available within 14 days.



Product Manufactured by: Independent Protection Co., Inc.
Product Distributed by: Ohio Valley Lightning Protection, Inc.
520 Leeka Road, New Vienna, OH 45159
Ph: 937.987.0245 or 866.220.2952 Fax: 937.987.0248
Email: LightningBuck@aol.com
Website: www.lightning-systems.com

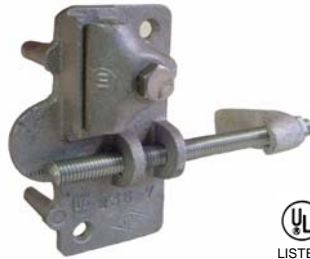


Connectors, Splicers, Fittings, Bonding Plates, Etc.



#235X - Bronze Heavy Duty Beam Flange Bonding Connector with 8 sq. inches of bonding surface. Ideal for bonding to flange of structural beams, columns and angles and steel purlins up to 3/4" thickness. Clamp type cable fastener fits all standard cables through 2/0. Requires no drilling. Clamps directly to edge of steel. Wt. 1.58 lb. ea. ★

#A235X - Same as above only in aluminum. Wt. .58 lb. ea. ★



#236 - Bronze Heavy Duty Metal Beam Connector with 8 sq. inches of bonding surface, with clamp type cable fastener for standard cables through 2/0. No drilling required, fits 4" to 6" beams. If required for larger beams, specify size. Size may be varied by using different length bolt. Bolt clip casting must be formed over edge of beam. Wt. .98 lb. ea.

#A236 - Same as above only in aluminum. Wt. .36 lb.



#237 - Bronze Heavy Duty Angle Iron Connector with 8 sq. inches of bonding surface, with clamp type cable fastener for standard cables through 2/0. Bronze bolt clip must be formed over edge of beam. Fits 2" to 4" size angles. (Reverse bolt clip for 2" size). Connector fastens directly to metal, no drilling required. For larger beams, specify size when ordering. Wt. 1.37 lb. ea.

#A237 - Same as above only in aluminum. Wt. .44 lb.

★ Denotes normally stocked item available for shipment within 48 hours. Items not stocked are available within 14 days.





Connectors, Splicers, Fittings, Bonding Plates, Etc.



#238 - Bronze Heavy Duty Bonding Plate with 8 sq. inches of bonding surface. Fits up to 3/4" diameter bolt, for standard cables through 2/0. Wt. .78 lb. ea. ★

#A238 - Same as above only in aluminum. Wt. .26 lb. ea. ★



#238B - Bronze Heavy Duty 2 Screw Metal Bonding Plate with clamp type cable fastener for all standard cables through 2/0. Affords 8 sq. inches of bonding surface. Wt. .66 lb. ea. ★

#A238B - Same as above only in aluminum. Wt. .22 lb. ea. ★



#298 - Bronze Small Cable and Flat Iron Clamp for connecting No. 4 and No. 6 wire or cables to flat metal tracks, supports, flashings, etc.. Wt. .18 lb. ea. ★

#A298 - Same as above only in aluminum. Wt. .08 lb. ea. ★



#298A - Bronze Large Cable and Flat Iron Clamp for connecting standard cable through 2/0 to angle iron, I beams and flat iron strips. Also services as cable holder on I beams. Wt. .40 lb. ea. ★

#A298A - Same as above only in aluminum. Wt. .16 lb. ea. ★

★ Denotes normally stocked item available for shipment within 48 hours. Items not stocked are available within 14 days.



Product Manufactured by: Independent Protection Co., Inc.
Product Distributed by: Ohio Valley Lightning Protection, Inc.
520 Leeka Road, New Vienna, OH 45159
Ph: 937.987.0245 or 866.220.2952 Fax: 937.987.0248
Email: LightningBuck@aol.com
Website: www.lightning-systems.com



Water Pipe Clamps



IPC water pipe clamps are easy to install. Caps have slotted holes so it is not necessary to remove screws. When tightened, the clamp grips both the cable and pipe. Bronze clamps are manufactured of special copper and are tinned to prevent corrosion. Clamps are very sturdy and durable.

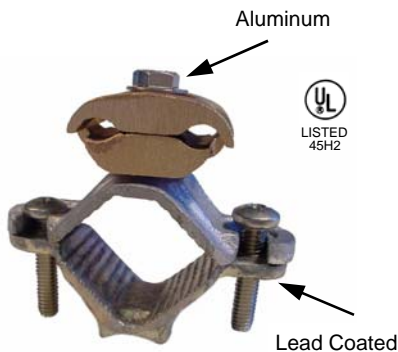


#306 - Bronze Perfection Pipe Clamp. Clamp type cable fastener, fits all standard cables through 2/0 and provides 1 1/2" contact with water pipes, rods television masts, etc. Fits 1/2", 3/4" and 1" iron water pipes and 1/4", 1/2", 5/8", 3/4" and 1" copper water pipes. Wt. .48 lb. ea. ★

#A306 - Aluminum Perfection Pipe Clamp. Wt. .18 lb. ea. ★

#306X - Bronze Medium Perfection Pipe Clamp, similar to above clamp, Fits 1 1/4" and 1 1/2" iron water pipes. (Maximum 1-3/4" O.D.). Wt. .82 lb. ea. ★

#A306X - Aluminum Medium Perfection Pipe Clamp. Wt. .26 lb. ea. ★



#306A - Bronze Large Perfection Pipe Clamp with clamp type cable fastener that swivels 360°. Fits 1 1/2" and 2" iron water pipes. (Max. 2 1/2" O.D.). Lower casting may be inverted to fit smaller diameter pipes and rods. Tinned to prevent corrosion. Wt. 1.04 lb. ea. ★

#A306A - Bi-Metallic Large Perfection Pipe Clamp. Wt. .80 lb. ea. ★



#306B - Bronze Extra Large Perfection Pipe Clamp with clamp type cable fastener that swivels 360°. Fits from 2 1/2" to 4" iron water pipes. (Max. 4" O.D.). Tinned to prevent corrosion. Wt. 1.48 lb. ea. ★

#A306B - Bi-Metallic Extra Large Perfection Pipe Clamp. Wt. 1.30 lb. ea. ★

★ Denotes normally stocked item available for shipment within 48 hours. Items not stocked are available within 14 days.



Product Manufactured by: Independent Protection Co., Inc.
Product Distributed by: Ohio Valley Lightning Protection, Inc.
520 Leeka Road, New Vienna, OH 45159
Ph: 937.987.0245 or 866.220.2952 Fax: 937.987.0248
Email: LightningBuck@aol.com
Website: www.lightning-systems.com



Heavy Duty Tite-Grip Water Pipe Strap



#117 - 12" Tite-Grip Strap for pipes up to 2". Wt. .42 lb. ea. ★
#117A - 18" Tite-Grip Strap for pipes up to 4". Wt. 1.21 lb. ea. ★
#117B - 32" Tite-Grip Strap for pipes up to 8". Wt. 1.70 lb. ea. ★

Note: Shape strap snugly around pipe until casting will slide within approximately 1/8" of pipe, then tighten screw located on flat part of casting. After screw is tight, tighten screw on beveled edge which will draw the strap very tight.



#117C - Bronze Clamp Only. Wt. .58 lb. ea. ★

★ Denotes normally stocked item available for shipment within 48 hours. Items not stocked are available within 14 days.



Product Manufactured by: Independent Protection Co., Inc.
Product Distributed by: Ohio Valley Lightning Protection, Inc.
520 Leeka Road, New Vienna, OH 45159
Ph: 937.987.0245 or 866.220.2952 Fax: 937.987.0248
Email: LightningBuck@aol.com
Website: www.lightning-systems.com



Band and Strap Connectors



#12 - Bonding Strap for 1/2" to 1 1/2" pipes inclusive. Part is tinned. Wt. .42 lb. ea.



#13 - Extension for 2", 2 1/2" and 3" pipes. Made of soft copper strip, tinned. By using a series of extensions, with #12 part shown above, bonding strap is adjustable for larger pipes. Wt. .26 lb. ea.



#118 - Vent Pipe Bonding Strap, for 2", 3" and 4" soil pipe. Cable connection for standard cables. Made of soft copper, tinned. Wt. .42 lb. ea. ★

#A118 - Same as above only in aluminum. Wt. .20 lb. ea. ★



#118X - Copper Vent Pipe Bonding Connector, for 2", 3" and 4" diameter pipes. Clamp type cable connector. Made of soft copper, tinned.. Wt. .80 lb. ea. ★

#A118X - Same as above only in aluminum. Wt. .30 lb. ea. ★



#214 - Band with Miniature Cable Attachment. Band 8" long. Very soft and pliable. Used for bonding electric conduit, guy rods and other similar metal bodies. Wt. .22 lb. ea. ★

#A214 - Aluminum Band with Miniature Cable Attachment. Wt. .08 lb. ea. ★

#215 - Band with Standard Cable Attachment. Wt. .28 lb. ea. ★

#A215 - Aluminum Band with Standard Cable Attachment. Wt. .14 lb. ea. ★

★ Denotes normally stocked item available for shipment within 48 hours. Items not stocked are available within 14 days.



Product Manufactured by: Independent Protection Co., Inc.
Product Distributed by: Ohio Valley Lightning Protection, Inc.
520 Leeka Road, New Vienna, OH 45159
Ph: 937.987.0245 or 866.220.2952 Fax: 937.987.0248
Email: LightningBuck@aol.com
Website: www.lightning-systems.com



Miscellaneous Connectors

Metal Track Connectors



- #4 - For Miniature Copper Cable.** Wt. .08 lb. ea. ★
- #A4 - For Miniature Aluminum Cable.** Wt. .04 lb. ea. ★
- #5 - For Standard Copper Cable.** Wt. .14 lb. ea. ★
- #A5 - For Standard Aluminum Cable.** Wt. .08 lb. ea. ★

Note: Furnished with 5/16" or 7/16" holes.

Cable and Section Rod Connectors



- #9 - Section Rod Top Coupler.** Wt. .24 lb. ea.



- #10 - Female Cable and Section Rod End to End Coupler.** Wt. .20 lb. ea.

- #11 - Male Cable and Section Rod End to End Coupler.** Wt. .20 lb. ea.



- #29 - Straight Connector** for splicing broken ends of section rod. Made of cast aluminum. Wt. .28 lb. ea.



- #216 - Parallel Cable & Section Rod Coupler.** Wt. .42 lb. ea.

★ Denotes normally stocked item available for shipment within 48 hours. Items not stocked are available within 14 days.



Product Manufactured by: Independent Protection Co., Inc.
Product Distributed by: Ohio Valley Lightning Protection, Inc.
520 Leeka Road, New Vienna, OH 45159
Ph: 937.987.0245 or 866.220.2952 Fax: 937.987.0248
Email: LightningBuck@aol.com
Website: www.lightning-systems.com



Miscellaneous Connectors



One Inch Strip and Flat Cable Connectors



#7X - 1" Strip and Standard Cable T Connector. Wt. .18 lb. ea. ★

#A7X - Aluminum 1" Strip and Standard Cable T Connector. Wt. .08 lb. ea. ★



#283 - Straight Connector for 1" Strip and Cable. Made of copper bronze. Wt. .26 lb. ea. ★

#A283 - Aluminum Straight Connector for 1" Strip and Cable. Wt. .08 lb. ea. ★



#283R - Right Angle Connector for 1" strip and cable. Made of copper bronze. Wt. .28 lb. ea.

#A283R - Aluminum Right Angle Connector for 1" Strip and Cable. Wt. .08 lb. ea.

5/8" Strip and Flat Cable Connectors



#6 - 5/8" Strip and Track or Metal Connector. Wt. .10 lb. ea.

#A6 - Aluminum 5/8" Strip and Track or Metal Connector. Wt. .04 lb. ea.



#7W - 5/8" Copper Strip and Standard Cable T Connector. Wt. .16 lb. ea.

#A7W - Aluminum 5/8" Copper Strip and Standard Cable T Connector. Wt. .04 lb. ea.

★ Denotes normally stocked item available for shipment within 48 hours. Items not stocked are available within 14 days.





Miscellaneous Connectors



No. 6 Wire Connectors



#305 - "T" Connector for Copper Cable and No. 6 Copper Wire. Wt. .14 lb. ea.

#A305 - Aluminum "T" Connector for Cable and No. 4 Wire. Wt. .04 lb. ea.



#305X - Straight Connector for No. 6 Wire and Copper Strip. Wt. .14 lb. ea.

#A305X - Aluminum Straight Connector for Strip and No. 4 Wire. Wt. .04 lb. ea.

Grip Tite Connectors



#307X - Copper Connector for 1" Strip. Wt. .14 lb. ea. ★

#A307X - Aluminum Connector for 1" Strip. Wt. .06 lb. ea. ★



#308 - Copper Connector for 1" Strip and Standard Cable. Wt. .28 lb. ea. ★

#A308 - Aluminum Connector for 1" Strip and Standard Cable. Wt. .14 lb. ea. ★

Note:

These type of connectors are more satisfactory than plain bolt type connections. Bolt breakage, due to expansion and contraction, is eliminated. It is not necessary to punch holes that could weaken the strip.

METHOD OF ATTACHING CONNECTORS

Slip connector over end of strip and shape strip snugly around pipe. When strip is shaped so connector will slip within 1/8" or 1/4" of pipe, tighten screw on flat surface. Then tighten screw on beveled edge until strip is tight.

★ Denotes normally stocked item available for shipment within 48 hours. Items not stocked are available within 14 days.



Product Manufactured by: Independent Protection Co., Inc.
Product Distributed by: Ohio Valley Lightning Protection, Inc.
520 Leeka Road, New Vienna, OH 45159
Ph: 937.987.0245 or 866.220.2952 Fax: 937.987.0248
Email: LightningBuck@aol.com
Website: www.lightning-systems.com



Sheet Metal Connectors



#120 - Bronze Bonding Connector for sheet metal and other applications. Furnished as tinned and for use with standard No. 2 cable. Wt. .22 lb. ea. ★

#A120 - Aluminum Bonding Connector. Same as above except part is not tinned. Wt. .10 lb. ea. ★



#219 - Bronze Metal Connector for standard No. 2 cable. Wt. .18 lb. ea. ★

#A219 - Aluminum Metal Connector. Wt. .06 lb. ea. ★

★ Denotes normally stocked item available for shipment within 48 hours. Items not stocked are available within 14 days.





Miscellaneous Connections



Sill Cock Connector

This connector can be fitted to standard sill cocks. It is not necessary to shut off water or remove any pipe connections—simply clamp connector on flange and hammer over fingers.

With our sill cock connector, it is possible to attach miniature and standard cable fittings, also 1/2" and 1" copper strip. You will find that this fitting not only saves time, but in many cases considerable material.



#300 - Copper Sill Cock Connector. Furnished complete with standard cable connector, unless otherwise specified. Wt. .40 lb. ea.

#A300 - Special Sill Cock Bi-Metal Connector for aluminum. Sill cock is copper and finger fastener is aluminum separated by a stainless steel washer. Wt. .32 lb. ea.

Grounding to Counterpoise System



#28U - Bronze 2" All Purpose U Bolt Clamp. This part is used in conjunction with IPC ground rod clamps for connecting to counterpoise ground systems. May be used for one or two horizontal cables through 2/0 and to rod up to 3/4" diameter. Clamp adjusts to various size cables and includes stainless steel nuts and washers. Wt. .62 lb. ea. ★



Detail view displays IPC's #51 ground rod clamp on ground rod with IPC #32S cable and #28U U Bolt Clamp, connected to a simulated counterpoise ground system. #28U is not intended to be the primary connection but is used as a secondary clamp for connection between a ground rod and counterpoise. Use of a ground clamp is necessary to meet UL requirements.

★ Denotes normally stocked item available for shipment within 48 hours. Items not stocked are available within 14 days.



Product Manufactured by: Independent Protection Co., Inc.
Product Distributed by: Ohio Valley Lightning Protection, Inc.
520 Leeka Road, New Vienna, OH 45159
Ph: 937.987.0245 or 866.220.2952 Fax: 937.987.0248
Email: LightningBuck@aol.com
Website: www.lightning-systems.com



Thru-Roof Cable Connectors



#272A - Thru-Roof Cable Connector, made of copper bronze with swivel cable connector on both ends, complete with washer, hex nut and lead seal washer with threaded stem to fit roof up to 2 1/2" thick. Wt. .76 lb. ea. ★

#A272A - Aluminum Thru-Roof Cable Connector. Wt. .46 lb. ea. ★



#325 - Bronze Feed Thru-Roof Connector with clamp type cable fastener furnished with two wood screws. Cable fastens underneath with finger type clamp and is fed down through roof or overhang. Underside is recessed and can be filled with plastic roof cement to afford perfect, weather tight seal. Wt. .72 lb. ea. ★

#A325 - Aluminum Feed Thru-Roof Connector. Wt. .24 lb. ea. ★



#326 - Bronze Feed Thru-Roof Connector with ball and socket swivel for easy adjustment to roof pitch (no greater than 5/12 roof pitch). 3" length threaded stem with hex nut and washer, two wood screws and clamp type cable connector. Underside is recessed and can be filled with plastic roof cement to afford perfect weather tight seal. (Note: For longer stems use couplers and threaded studs that are found elsewhere in the catalog) Wt. 1.24 lb. ea. ★

#A326 - Aluminum Feed Thru-Roof Connector. Wt. .50 lb. ea. ★



#597 - Bronze Straight Thru-Roof Connector consists of top and bottom cable connector, neoprene washer, hex nut and bottom washer, 1/2" x 8" threaded stem. Fits up to 6" thick roof. If longer stem is required, specify when ordering. Wt. 1.10 lb. ea. ★

#A597 - Aluminum Straight Thru-Roof Connector. Wt. .68 lb. ea. ★

★ Denotes normally stocked item available for shipment within 48 hours. Items not stocked are available within 14 days.



Product Manufactured by: Independent Protection Co., Inc.
Product Distributed by: Ohio Valley Lightning Protection, Inc.
520 Leeka Road, New Vienna, OH 45159
Ph: 937.987.0245 or 866.220.2952 Fax: 937.987.0248
Email: LightningBuck@aol.com
Website: www.lightning-systems.com



Thru-Roof Cable Connectors



#597R - Bronze Right Angle Thru-Roof Connector consists of bolt type top cable connector, bronze and neoprene washer, 1/2" x 8" threaded stem, hex nut and washer and bronze bottom connector. Fits up to 6" roof thickness. If required for thicker roof, specify when ordering. Wt. 1.30 lb. ea. ★

#A597R - Aluminum Right Angle Thru-Roof Connector. Wt. .74 lb. ea. ★



#597X - Bronze Right Angle Thru-Roof Connector consists of clamp type top cable connector, 4" square roof flashing plate, 1/2" x 8" threaded stem, hex nut and washer, and adjustable bottom clamp. Fits up to 6" roof thickness. If required for thicker roof, specify when ordering. Wt. 2.04 lb. ea.

#A597X - Aluminum Right Angle Thru-Roof Connector. Wt. 1.10 lb. ea.



#597C - Bronze Thru-Roof for 1" up to 2" PVC Conduit. Consists of 597 bronze protector cap with 60U bronze cable connector, 1/2" x 8" length threaded stem, 179 base plate and bottom cable connector. Wt. 1.82 lb. ea. ★

#A597C - Aluminum Thru-Roof 1" up to 2" PVC Conduit Connector. Wt. .92 lb. ea. ★

#597BM - Bimetallic Thru-Roof for 1" up to 2" PVC Conduit Connector, consists of A597 aluminum cap with cable connector, 1/2" x 8" length threaded stainless steel stem, with 179 bronze base plate and bronze bottom cable connector. Wt. 1.10 lb. ea. ★

Please Note: The PVC shown in the assembly photo is for illustrative purposes only. The PVC is provided by the installing dealer contractor or by others on the job site. Longer threaded stems are available upon request.

★ Denotes normally stocked item available for shipment within 48 hours. Items not stocked are available within 14 days.



Product Manufactured by: Independent Protection Co., Inc.
Product Distributed by: Ohio Valley Lightning Protection, Inc.
520 Leeka Road, New Vienna, OH 45159
Ph: 937.987.0245 or 866.220.2952 Fax: 937.987.0248
Email: LightningBuck@aol.com
Website: www.lightning-systems.com



Other Connectors



#597 CAP - Bronze Thru-Roof Connector and Cap. This includes both the Cable Connector and cap for thru-roof assemblies. Both parts are included when this part number is ordered. Drilled for 1/2" threads. Nut and washer are not included. Wt. .60 lb. ea. ★

#A597 CAP - Same as above except in aluminum. Wt. .18 lb.



#597 Bottom Only - Copper Connector used in thru-roof air terminal installations. Available with set screws or hex-head screws. Please specify when ordering. Wt. .26 lb. ea. ★

#A597 Bottom Only - Aluminum Connector. Wt. .08 lb. ea. ★

Thru-Wall Connector

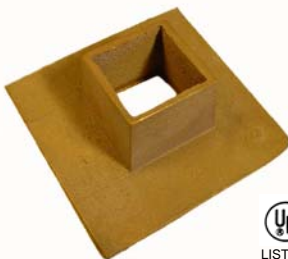


#272W - Bronze Thru-Wall Connector consists of 3/8" x 12" copper stem and two adjustable clamp type cable fasteners. Fits up to 10" thick wall. Longer stems can be furnished when specified. Wt. 1.16 lb. ea. ★

#272X - Bronze Thru-Wall Connector as 272W but stem is 1/2" x 12". Wt. 1.80 lb. ea.

#A272X - Aluminum Thru-Wall Connector consists of 1/2" by 12" aluminum stem. Wt. .62 lb. ea.

Pitch Pocket



#343 - Bronze Pitch Pocket, 5" square, 2" deep, with 1 3/4" square center hole. Used on flat roof. Center section is filled with pitch. Makes permanent, water tight thru-roof connection. Wt. 1.50 lb. ea.

#A343 - Aluminum Pitch Pocket. Wt. .38 lb. ea.

#343C - Copper Sheet Pitch Pocket, 12" square, made of 16 oz. copper with an approximate 4" dia., 2" deep, Pitch Pocket. Wt. 1.72 lb. ea.

★ Denotes normally stocked item available for shipment within 48 hours. Items not stocked are available within 14 days.



Product Manufactured by: Independent Protection Co., Inc.
Product Distributed by: Ohio Valley Lightning Protection, Inc.
520 Leeka Road, New Vienna, OH 45159
Ph: 937.987.0245 or 866.220.2952 Fax: 937.987.0248
Email: LightningBuck@aol.com
Website: www.lightning-systems.com



Bus Terminals



#G67 - Bronze Heavy Duty Bus Terminal for connecting standard cables through 2/0 to flat metal surfaces. Wt. .28 lb. ea. ★

#AG67 - Aluminum Heavy Duty Bus Terminal. Wt. .12 lb. ea.

#G68 - Bronze Small Bus Terminal for connecting No. 4 or No. 6 cable to small bodies of metal. Wt. .14 lb. ea. ★

#AG68 - Aluminum Small Bus Terminal. Wt. .06 lb. ea.



#347 - Bronze Heavy Duty Bus Terminal with 6" of surface contact for connecting two cables up to 4/0 size or 5/8" dia. to metal surfaces. Hole diameter are for 1/2" bolts. Cable fastener is two bolt style. Wt. 1.12 lb. ea.

#A347 - Aluminum Heavy Duty Bus Terminal. Wt. .46 lb. ea.



#596 - Bronze Bus Terminal Metal Connector with clamp type cable fastener for standard cables through 2/0. Fits over 1/2" bolt, for larger size bolt when specified. Clamp has 5 sq. inches of bonding surface. Wt. .54 lb. ea. ★

#A596 - Aluminum Bus Terminal Metal Connector. Wt. .18 lb. ea.



#596A - Bronze Extra Heavy Bus Terminal. 3 sq. inches of surface contact, for connecting 4/0 size cable to columns or for larger metal bodies. Specify cable size when ordering. Standard hole size for 1/2" bolt but are available for larger size bolt when specified. Wt. .68 lb. ea. ★

#A596A - Aluminum Extra Heavy Bus Terminal. Wt. .24 lb. ea.

★ Denotes normally stocked item available for shipment within 48 hours. Items not stocked are available within 14 days.



Product Manufactured by: Independent Protection Co., Inc.
Product Distributed by: Ohio Valley Lightning Protection, Inc.
520 Leeka Road, New Vienna, OH 45159
Ph: 937.987.0245 or 866.220.2952 Fax: 937.987.0248
Email: LightningBuck@aol.com
Website: www.lightning-systems.com



Bi-Metal Connectors



When interconnecting aluminum and copper cables, It is very important that special bimetal connectors be used to eliminate corrosion. Over time, an electro-chemical reaction takes place causing corrosion issues. This corrosion is eliminated by using these sealed joint connectors. Following is this superior line of bimetal connectors that IPC manufactures for installations requiring this type of connector.



#A304A - Bimetal Aluminum to Copper "T" Splicer, Clamp Type, made of cast aluminum and bronze inherently molded as one unit for splicing standard aluminum cable to copper cable through 2/0 size. Wt. .58 lb. ea. ★



#A304B - Bimetal Copper to Aluminum "T" Splicer, Clamp Type, made of cast aluminum and bronze inherently molded as one unit for splicing standard copper cable to aluminum cable through 2/0 size. Wt. .62 lb. ea. ★



#306CX - Small Copper Pipe Clamp with bolt-type cable fastener that swivels 360°. Fits maximum size 3/4" copper pipe. By inverting lower casting, clamp fits 1/4", 1/2" and 5/8" copper pipes. Tinned to prevent corrosion. Wt. .62 lb. ea. ★

#A306CX - Bimetal Copper Pipe to Aluminum Cable Clamp. Aluminum bolt-type cable fastener swivels 360° and has bimetallic washer between aluminum cable clamp and copper clamp. Fits maximum size 3/4" copper pipe. By inverting lower casting, clamp fits 1/4", 1/2" and 5/8" copper pipes. Copper pipe clamp tinned to prevent corrosion. Wt. .40 lb. ea. ★



#A33D - Deluxe Bimetal Straight Splicer made of cast aluminum and bronze, used for splicing standard aluminum cable to copper cable through 2/0. This splicer is approved by UL and will withstand more than 900 pounds of pull strength and provides perfect moisture seal. Wt. .36 lb. ea. ★

★ Denotes normally stocked item available for shipment within 48 hours. Items not stocked are available within 14 days.





Bi-Metal Connectors



#A34A - "T" Splicer for Connecting Aluminum to Copper. Wt. .34 lb. ea. ★



#A34B - "T" Splicer for connecting copper to aluminum cables. Wt. .30 lb. ea. ★



#A41P - Bimetal Parallel Copper to Aluminum Splicer, Clamp Type, made of cast aluminum and bronze inherently molded as one unit for splicing standard aluminum cable to copper cable through 2/0 size. Wt. .30 lb. ea. ★



#A175 - Bimetal Connector—Disconnecter made of cast aluminum and bronze with clamp type cable connectors for standard cables through 2/0. Heavy duty construction for Class II requirements. Wt. .58 lb. ea. ★

★ Denotes normally stocked item available for shipment within 48 hours. Items not stocked are available within 14 days.



Product Manufactured by: Independent Protection Co., Inc.
Product Distributed by: Ohio Valley Lightning Protection, Inc.
520 Leeka Road, New Vienna, OH 45159
Ph: 937.987.0245 or 866.220.2952 Fax: 937.987.0248
Email: LightningBuck@aol.com
Website: www.lightning-systems.com



Bi-Metal Connectors



#A183 - Bimetal Bonding Plate made of cast aluminum and bronze for connecting all standard copper cable through 2/0 to aluminum beams and other large structural aluminum metal bodies requiring 8 square inches of bonding surface as provided by the aluminum portion of this clamp. Connector has clamp type cable fastener. Wt. .60 lb. ea. ★

#A183A - Bimetal Bonding Plate made of cast aluminum and bronze for connecting all standard copper cables through 2/0 to aluminum flashing, ventilators, roofing, siding and other small bodies of aluminum requiring minimum of 3 square inches of bonding surface. This bonding plate affords 4 1/2" inches of bonding surface, and connector has clamp type cable fastener. Wt. .58 lb. ea. ★



#A183X - Bimetal Connector made of cast aluminum and bronze for connecting all standard copper cables through 2/0 to aluminum strip, eave trough or other small metallic bodies of inductance. Connector has clamp type cable fastener. Wt. .48 lb. ea. ★



#290 - Small Bimetal Straight Splicer made of stainless steel for splicing miniature aluminum and copper cable. Fits No. 4 or No. 6 size cable. Wt. .14 lb. ea.

★ Denotes normally stocked item available for shipment within 48 hours. Items not stocked are available within 14 days.

